

The Ensoulment Process ...

- (1) Waking up
- (2) Soul-less-ness
- (3) Alchemy
- (4) Ensoulment
- (5) Into the World

We start each gathering with meditation, move through ensoulment and close with an intimate circling practice. Our shared soul inquiry engages multidisciplinary methods (dyads, group sharing, presentations, journaling, poetry and other creative expressions) to open up channels of communication between our human personality and our soul.

Look for Natalie Zeituny's new book **Ensoulment: Journey of a Wild Mystic** to be published 2016! For inquiries ,events & presentations please call 054.692.0240



NATALIE ZEITUNY



Natalie Zeituny is a modern mystic, both medicine

woman-soul whisperer and a social entrepreneur. As a teacher, writer and lover of all things slow and deep, her third book "Ensoulment" will be released in 2016. She is currently engaged in the creation of few social ventures and offers intuitive energy healing counseling in her private practice and ensoulment circles worldwide.

Natalie background includes Information Technology and Conscious Business. She has over 20 years' experience in business strategy and information architecture. In 2002 she founded NZConsulting advising clients such as Apple, Yahoo, Brocade, Netapp and UCSF . In 2006 she founded the Conscious Business Center ® and in 2007 published the book "The "Ladder of Business Intelligence. Trained as an Energy, Consciousness & Mindfulness consultant to corporations, the last 10 years she has taught and guided hundreds of private clients, business executives and groups at companies such as Yahoo, Apple, SalesForce and Morgan Stanley.

054.592.0240 / 415.385.7818
www.ensoulment.info

SOUL ENCOUNTERS



Soul Encounters 2016 is a monthly gathering of friends learning to express their souls through the practice of **Ensoulment**

Ensoulment: a state of being where your soul becomes the guiding source-energy of your life.

Natalie Zeituny





ENSOULMENT

Ensoulement is a powerful process that connects you with your soul and encourages you to live your essence into the world. Releasing old habits and fears, expectations or cultural programs, you discover and **live your true soul colors**.



When our soul enters

our body, it grows and develops in spiral phases toward full blossom. Ensoulment is a transformational practice that invites our soul to become embodied and expressed through our life right here, right now. As we become less identified with our thoughts and ideas, our personal programs or cultural conditioning, we move toward a way of feeling, thinking, being and doing which originates from our essence.

We call this ensoulment.

WHO IS YOUR SOUL?

- What is the difference between personality and soul?
- How do the personality and the soul connect?
- What makes your soul blossom, what makes her wilt?
- What is your soul's language?
- What is your unique soul cosmology?



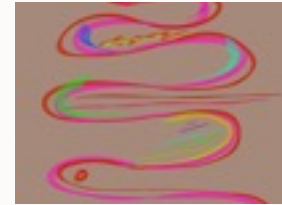
My soul is ancient and deeply rooted ...



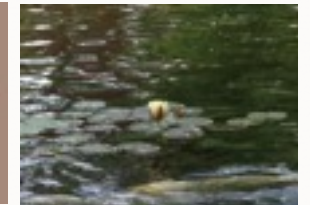
My soul is formed in the womb of the Universe ...

HOW DOES YOUR SOUL GROW AND EVOLVE?

- What are the ensoulment phases?
- What are your unique soul fertilizers and soulful practices?
- Your soul's archetypes (Modern Mystic, Wild Woman?)
- Programs and Soulful Essence
- What are soul spaces?
- What are soulful encounters?



My soul grows vibrantly, a serpent of kundalini energy!



My soul evolves quietly, a lotus in a hidden inner lake.

WHAT IS THE "SOUL OF THE WORLD" AND YOUR PLACE IN IT?

- What is the mind-heart-soul-body-cosmos connection?
- How do soul experiences, insights and visions work together?
- Intimacy with self, others and the world as soul oxygen
- Soul-print: a primary mathematical- geometrical- sensuous formula representing your unique "way of being"



The Soul of the World is creation and her cycles ...



I am a Work of Art and I am The Artist at play!